

OPEN SPACE AREA CHART		
PROJECT ZONED: RM-4		
DESCRIPTION	REQUIRED	PROVIDED
MINIMUM OPEN SPACE (SQUARE FEET PER UNIT)	150 S.F.	433 S.F.
DWELLING UNITS (237) X OPEN SPACE (150 S.F.)	35,550 S.F.	102,760 S.F.
MINIMUM PRIVATE OPEN SPACE		
1- BEDROOM DWELLING UNITS	60 S.F.	60 S.F.
2- BEDROOM DWELLING UNITS	100 S.F.	100 S.F.
3- BEDROOM DWELLING UNITS	120 S.F.	120 S.F.

* ALL PRIVATE OPEN SPACE GROUND LEVEL (PATIOS & YARDS) HAVE A MINIMUM DIMENSION OF 10 FEET
+ ALL PRIVATE OPEN SPACE ABOVE GROUND LEVEL (BALCONIES) HAVE THE MINIMUM 60 S.F. AND DIMENSIONS NOT LESS THAN 10'-0" WIDE BY 6'-0" DEEP.
^ ALL PRIVATE OPEN SPACE IS AT LEAST 50 PERCENT COVERED AND ONE SIDE IS UNOBSTRUCTED BETWEEN 3 AND 8 FEET ABOVE ITS FLOOR LEVEL.

- LEGEND**
- CARPORT
 - SIDEWALK
 - TENSILE SHADE STRUCTURE
 - TRASH COLLECTION ZONE

TRASH COLLECTION
PROJECT WILL HAVE PRIVATE TRASH COLLECTION MINI TRASH COMPACTORS WILL OPERATE WITHIN TRASH ROOMS IN THE BUILDINGS BINS WILL BE WHEELED OUT TO DESIGNATED TRASH COLLECTION ZONES AT DESIGNATED PICK-UP TIMES ARRANGED WITH PRIVATE COMPANY.

SITE DATA

ACCESSOR'S PARCEL NUMBER	218-44-001D
NET SITE AREA	+/- 8.692 AC
EXISTING & PROPOSED ZONING	RM-4 (R-4)
EXISTING USE	VACANT
PROPOSED USE	MULTI-FAMILY SENIOR
DENSITY ALLOWED (NET)	30 DU/AC
NET DENSITY PROVIDED	+/- 27.27 DU/AC
BUILDING FOOTPRINT AREA	104,577 SF
BUILDING HEIGHT MAXIMUM ALLOWED	40'
BUILDING HEIGHT MAXIMUM PROPOSED	40'
BROADWAY ROAD SETBACK REQUIRED	20'
HAWES ROAD SETBACK REQUIRED	20'
SIDE BUILDING SETBACK REQUIRED	15' PER STORY
REAR BUILDING SETBACK REQUIRED	15' PER STORY
OTHER DEVELOPMENT STANDARDS ARE TO BE DETERMINED THROUGH THE SITE PLANNING PROCESS.	

APARTMENTS UNIT MIX

UNIT TYPE	RATIO	#DU
A 1BR/1BA	34%	99
B 2BR/2BA	57%	120
C 3BR/2BA	9%	18
TOTAL	100.0%	237

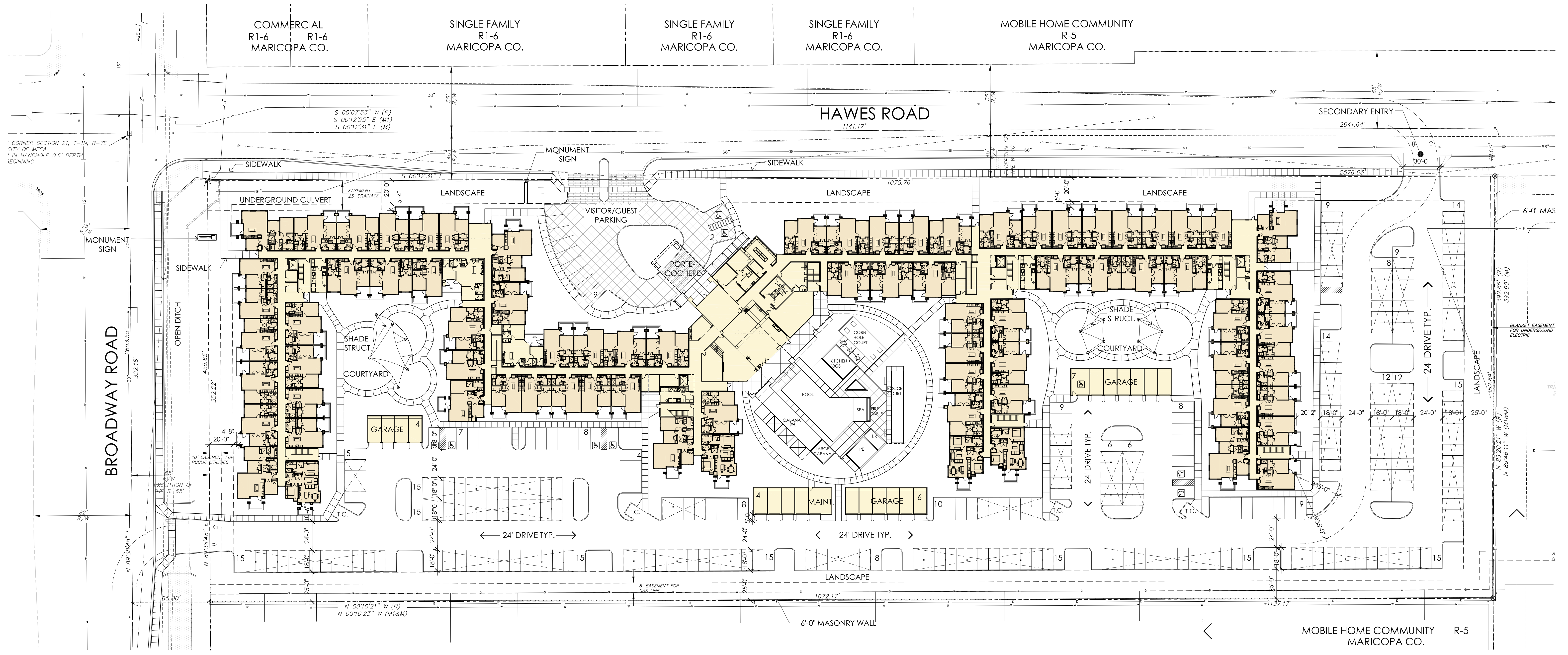
PARKING REQUIRED (9' x 18') (MIN. 1 COVERED SPACE / D.U.)

UNIT TYPE	#DU	P.S. RATIO	P.S. REQ.
A 1BR/1BA	99	2.1 P.S./DU	208
B 2BR/2BA	120	2.1 P.S./DU	252
C 3BR/2BA	18	2.1 P.S./DU	38
TOTAL			498 (237 COVERED)

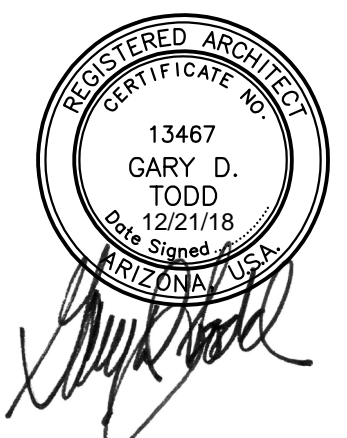
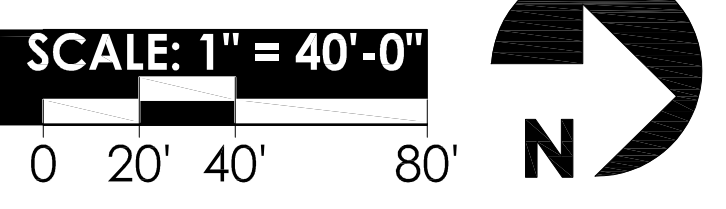
PARKING PROVIDED (1.405 P.S./DU)

TYPE	#DU	P.S. REQ.
SURFACE PARKING PROVIDED (UNCOVERED)	96	208
PARKING GARAGES (COVERED)	21	216
TOTAL PARKING PROVIDED (COVERED)		216 P.S.
TOTAL PARKING PROVIDED		333 P.S.

FINAL PARKING RATIO= 1.405 P.S./DU



CONCEPTUAL SITE PLAN



APARTMENTS at NEC of BROADWAY & HAWES

MASTER PLANT LEGEND

SYMBOL	BOTANICAL NAME	COMMON NAME	SIZE	QTY.
	ACACIA SALICINA 'DORIS D'	HYBRID WILLOW ACACIA	24' / 36" BOX*	42
	PARKINSONIA 'AZT'	HYBRID PALO VERDE	24' / 36" BOX*	20
	PROSOPIS HYBRID 'LESLIE ROY'	TEXAS HONEY MESQUITE	24' / 36" BOX*	42
	QUERCUS VIRGINIANA	LIVE OAK	24' / 36" BOX*	31
	SISSOO	DALBERGIA SISSOO	24" BOX	69
	ASH	FRAXINUS VELUTINA	24' / 36" BOX*	17
	CAESALPINIA MEXICANA	MEXICAN BIRD OF PARADISE	24' / 36" BOX*	31
	CHITALPA TASHKENTENSIS	CHITALPA	24' / 36" BOX*	33
	PHOENIX DACTYLIFERA	DATE PALM (DIAMOND CUT)	24 TF	10
	PHOENIX ROBELINII	PYGMY DATE PALM	15 GAL	35

*NOTE: FINAL PLANS TO INDICATE INDIVIDUAL TREE SIZES TO MEET CITY REQUIRED SIZES

SHRUBS

	BOUGAINVILLEA 'LA JOLLA'	SHRUB BOUGAINVILLEA	5 GAL	190
	CAESALPINIA PULCHERRIMA	RED BIRD OF PARADISE	5 GAL	155
	CORDIA PARVIFOLIA	LITTLE LEAF CORDIA	5 GAL	105
	DODONEA VISCOSA	GREEN HOPSEED	5 GAL	60
	EREMOPHILA HYGROPHANA	BLUE BELLS	5 GAL	139
	LEUCOPHYLLUM 'LYNNE'S LEGACY'	HYBRID TEXAS SAGE	5 GAL	87
	MUHLENBERGIA RIGENS	DEER GRASS	5 GAL	184
	OLEA EUROPAEA 'DWARF OLIVE'	DWARF OLIVE	5 GAL	162
	RUPELLIA PENINSULARIS	BAJA RUELLIA	5 GAL	351
	RUESSELIA EQUITIFORMIS	CORAL FOUNTAIN	5 GAL	345
	TECOMA STANS ANGUSTATA	YELLOW BELLS	5 GAL	26

ACCENTS

	AGAVE DESMETIANA	VARIEGATED SMOOTH AGAVE	5 GAL	31
	ALOE BARBADENSIS	MEDICINAL ALOE	5 GAL	104
	DASYLIRON WHEELERI	DESERT SPOON	5 GAL	204
	DIETES IRRIDIODES	AFRICAN IRIS	5 GAL	30
	ECHINOCACTUS GRUSONII	GOLDEN BARREL CACTUS	5 GAL	39
	FOUQUIERIA SPLENDENS	OCOTILLO	24" BOX	42
	HESPERALOE FUNIFERA	YUCCA	15 GAL	78
	HESPERALOE PARVILORA	RED YUCCA	5 GAL	349
	OPUNTIA VIOLACEA	PURPLE PRICKLY PEAR	5 GAL	118
	PORTULACARIA AFRA	ELEPHANT'S FOOD	35	
	PACHY CERUS MARGINATUS	MEXICAN FENCE POST	15 GAL	3

GROUNDCOVERS

	EREMOPHILA GLABRA 'MINGENOW GOLD'	OUTBACK SUNRISE EMU	1 GAL	140
	LANTANA 'DALLAS RED'	RED LANTANA	1 GAL	37
	LANTANA 'NEW GOLD'	NEW GOLD LANTANA	1 GAL	148
	ROSMARINUS OFFICINALIS 'HUNTINGTON CARPET'	TRAILING ROSEMARY	5 GAL	227
	SETCREASEA PALLIDA	PURPLE HEART	5 GAL	63
	SPHAGNETICOLA TRILOBATA	YELLOW DOT	1 GAL	66

VINES

	BOUGAINVILLEA 'BARBARA KARST'	BOUGAINVILLEA VINE	5 GAL	10
	BIGNONIA CAPREOLATA	CROSSVINE	5 GAL	27

MISC

	DECOMPOSED GRANITE: 2" DEPTH (U.O.N.) OF 1/2" SCREENED 'MADISON GOLD'			
	SYNTHETIC TURF: 'HEATWAVE' 65 OZ. NYLON, AVAILABLE FROM SYNTHETIC TURF SYSTEMS			
	DECOMPOSED GRANITE COBBLE RIP RAP: ARIZONA GOLD BY GRANITE EXPRESS FOUND IN ACCENT AREAS			

TURF

LANDSCAPE DATA

ACCESSOR'S PARCEL NUMBER	218-44-001D
ZONING	RM-4
TOTAL UNITS	237 DU
REQUIRED PUBLIC OPEN SPACE PER UNIT	150 SF/DU
REQUIRED PUBLIC OPEN SPACE (150 SF x 237 DU)	35,550 SF
PROPOSED PUBLIC OPEN SPACE	102,760 SF

LANDSCAPE REQUIREMENTS

LOCATION	REQUIRED TREES	PROVIDE TREES
HAWES FRONTAGE	1 PER 25 L.F.: 39	39
BROADWAY FRONTAGE	1 PER 25 L.F.: 13	13
NORTH PERIMETER	1 PER 20 L.F.: 16	16
EAST PERIMETER	1 PER 20 L.F.: 53	53



CONCEPTUAL LANDSCAPE PLAN

SCALE: 1" = 40'-0"
0 20' 40' 80'



APARTMENTS at NEC of BROADWAY & HAWES

MASTER PLANT LEGEND

SYMBOL	BOTANICAL NAME	COMMON NAME	SIZE	QTY.
	ACACIA SALICINA 'DORIS D'	HYBRID WILLOW ACACIA	24' / 36" BOX*	42
	PARKINSONIA 'AZT'	HYBRID PALO VERDE	24' / 36" BOX*	20
	PROSOPIS HYBRID 'LESLIE ROY'	TEXAS HONEY MESQUITE	24' / 36" BOX*	42
	QUERCUS VIRGINIANA	LIVE OAK	24' / 36" BOX*	31
	SISSOO	DALBERGIA SISSOO	24" BOX	69
	ASH	FRAXINUS VELUTINA	24' / 36" BOX*	17
	CAESALPINIA MEXICANA	MEXICAN BIRD OF PARADISE	24' / 36" BOX*	31
	CHITALPA TASHKENTENSIS	CHITALPA	24' / 36" BOX*	33
	PHOENIX DACTYLIFERA	DATE PALM (DIAMOND CUT)	24 TF	10
	PHOENIX ROBELINII	PYGMY DATE PALM	15 GAL	35

*NOTE: FINAL PLANS TO INDICATE INDIVIDUAL TREE SIZES TO MEET CITY REQUIRED SIZES

SHRUBS

	BOUGAINVILLEA 'LA JOLLA'	SHRUB BOUGAINVILLEA	5 GAL	190
	CAESALPINIA PULCHERRIMA	RED BIRD OF PARADISE	5 GAL	155
	CORDIA PARVIFOLIA	LITTLE LEAF CORDIA	5 GAL	105
	DODONAEA VISCOSA	GREEN HOPSEED	5 GAL	60
	EREMOPHILA HYGROPHANA	BLUE BELLS	5 GAL	139
	LEUCOPHYLLUM 'LYNN'S LEGACY'	HYBRID TEXAS SAGE	5 GAL	87
	MUHLENBERGIA RIGENS	DEER GRASS	5 GAL	184
	OLEA EUROPAEA 'DWARF OLIVE'	DWARF OLIVE	5 GAL	162
	RUELLIA PENINSULARIS	BAJA RUELLIA	5 GAL	351
	RUESSELIA EQUITIFORMIS	CORAL FOUNTAIN	5 GAL	345
	TECOMA STANS ANGUSTATA	YELLOW BELLS	5 GAL	26

ACCENTS

	AGAVE DESMETIANA	VARIEGATED SMOOTH AGAVE	5 GAL	31
	ALOE BARBADENSIS	MEDICINAL ALOE	5 GAL	104
	DASYLIRON WHEELERI	DESERT SPOON	5 GAL	204
	DIETES IRRIDIODES	AFRICAN IRIS	5 GAL	30
	ECHINOCACTUS GRUSONII	GOLDEN BARREL CACTUS	5 GAL	39
	FOUQUIERIA SPLENDENS	OCOTILLO	24" BOX	42
	HESPERALOE FUNIFERA	GIANT YUCCA	15 GAL	78
	HESPERALOE PARVILORA	RED YUCCA	5 GAL	349
	OPUNTIA VIOLACEA	PURPLE PRICKLY PEAR	5 GAL	118
	PORTULACARIA AFRA	ELEPHANT'S FOOD	5 GAL	35
	PACHYERUS MARGINATUS	MEXICAN FENCE POST	15 GAL	3

GROUNDCOVERS

	EREMOPHILA GLABRA 'MINGENOW GOLD'	OUTBACK SUNRISE EMU	1 GAL	140
	LANTANA 'DALLAS RED'	RED LANTANA	1 GAL	37
	LANTANA 'NEW GOLD'	NEW GOLD LANTANA	1 GAL	148
	ROSMARINUS OFFICINALIS 'HUNTINGTON CARPET'	TRAILING ROSEMARY	5 GAL	227
	SETCREASEA PALLIDA	PURPLE HEART	5 GAL	63
	SPHAGNETICOLA TRILOBATA	YELLOW DOT	1 GAL	66

VINES

	BOUGAINVILLEA 'BARBARA KARST'	BOUGAINVILLEA VINE	5 GAL	10
	BIGNONIA CAPREOLATA	CROSSVINE	5 GAL	27

MISC

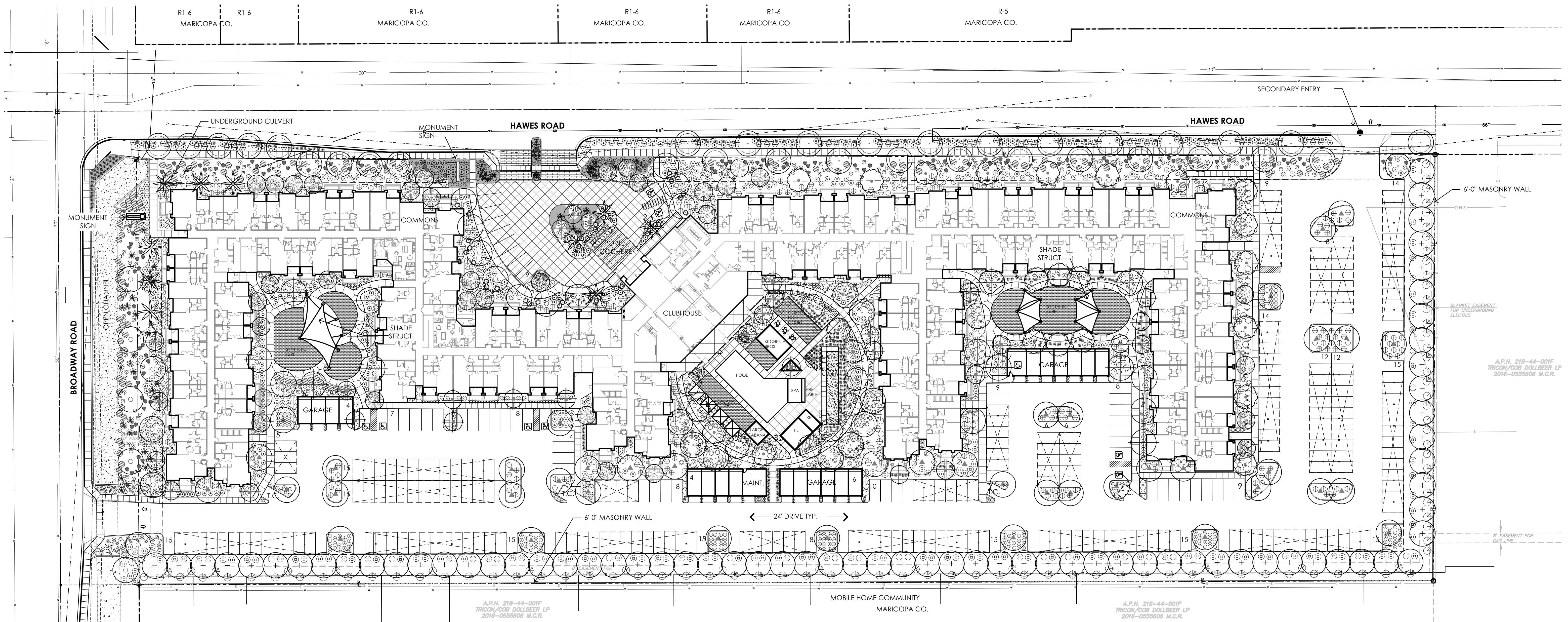
	DECOMPOSED GRANITE: 2" DEPTH (U.O.N.) OF 1/2" SCREENED 'MADISON GOLD'			
	SYNTHETIC TURF: 'HEATWAVE' 65 OZ. NYLON, AVAILABLE FROM SYNTHETIC TURF SYSTEMS			
	DECOMPOSED GRANITE COBBLE RIP RAP: ARIZONA GOLD BY GRANITE EXPRESS			

LANDSCAPE DATA

ACCESSOR'S PARCEL NUMBER	218-44-001D
ZONING	RM-4
TOTAL UNITS	237 DU
REQUIRED PUBLIC OPEN SPACE PER UNIT	150 SF/DU
REQUIRED PUBLIC OPEN SPACE (150 SF x 237 DU)	35,550 SF
PROPOSED PUBLIC OPEN SPACE	108,135 SF

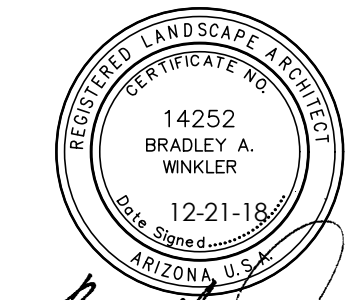
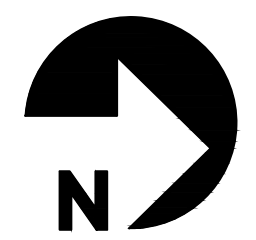
LANDSCAPE REQUIREMENTS

LOCATION	REQUIRED TREES	PROVIDE TREES
HAWES FRONTAGE	1 PER 25 L.F.: 39	39
BROADWAY FRONTAGE	1 PER 25 L.F.: 13	13
NORTH PERIMETER	1 PER 20 L.F.: 16	16
EAST PERIMETER	1 PER 20 L.F.: 53	53

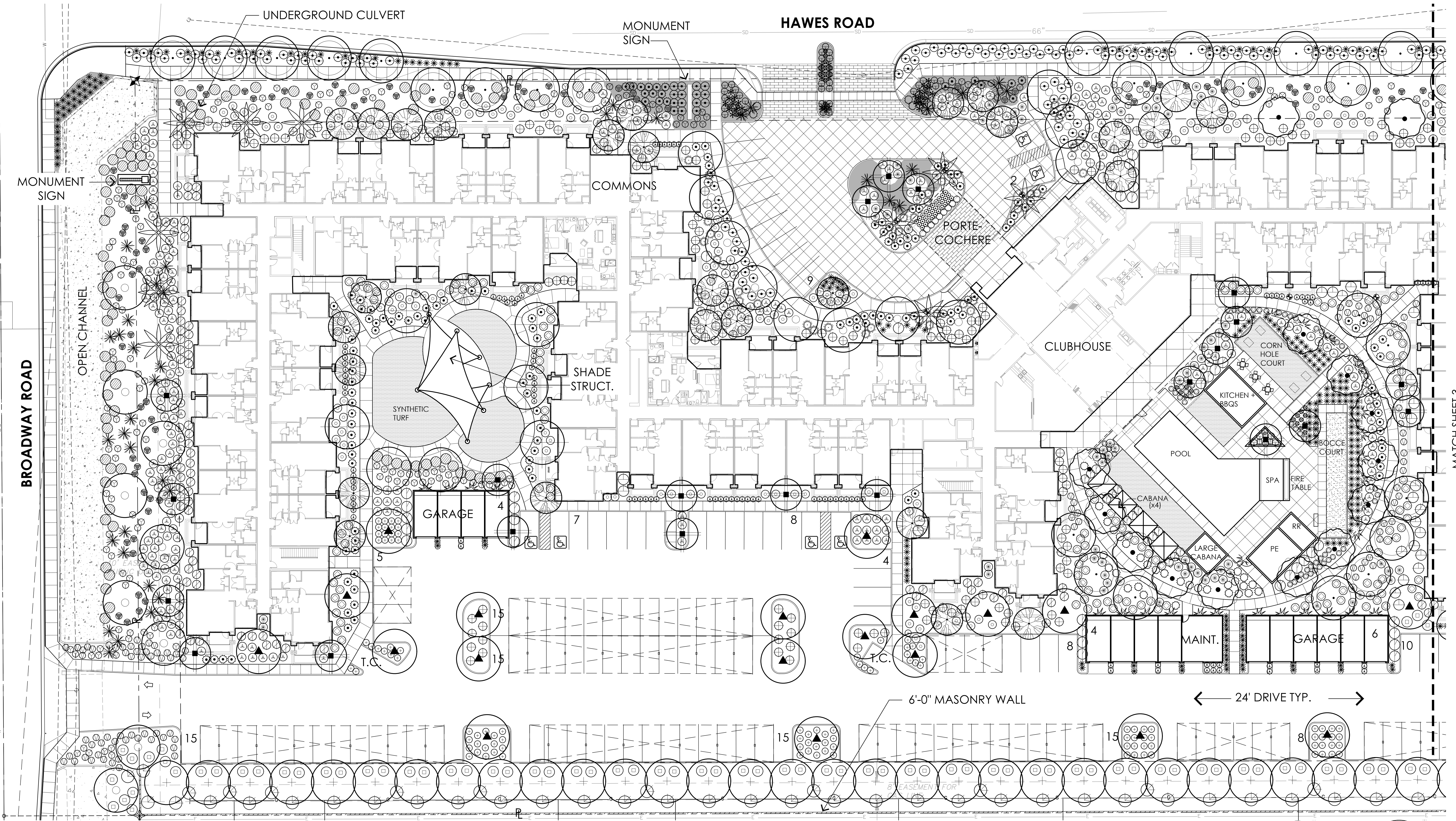


CONCEPTUAL LANDSCAPE PLAN

SCALE: 1" = 40'-0"
0 20' 40' 80'

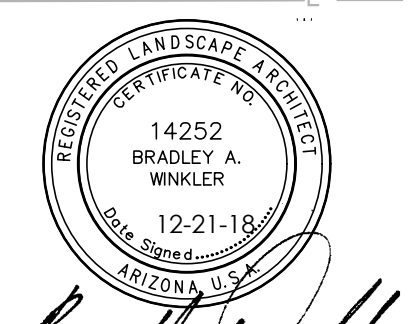
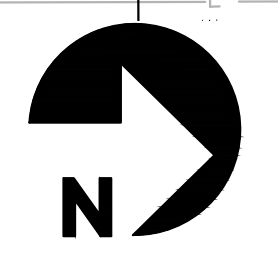


APARTMENTS at NEC of BROADWAY & HAWES



2: CONCEPTUAL LANDSCAPE PLAN ENLARGED

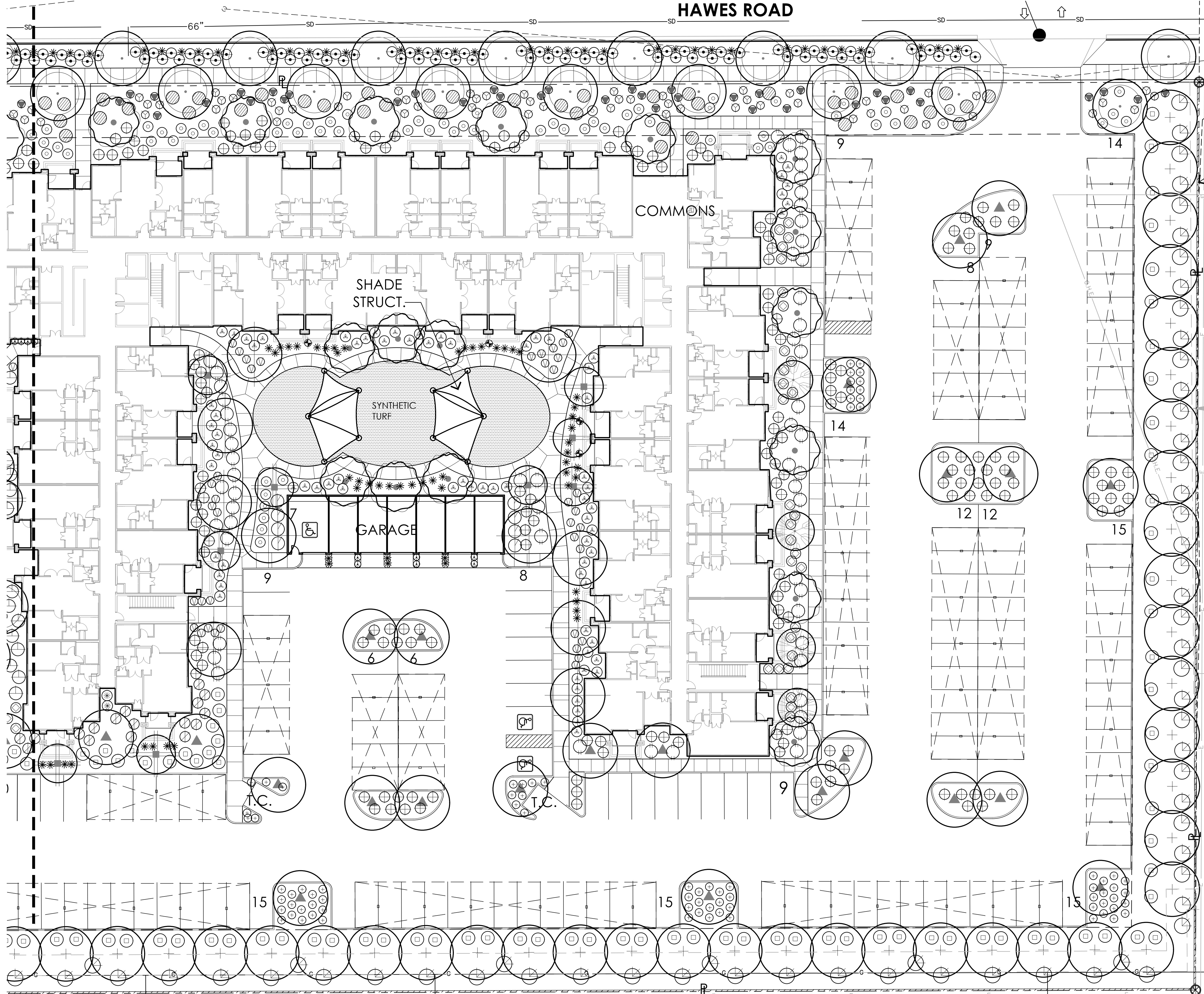
SCALE: 1" = 20'-0"
 0 10' 20' 40'



APARTMENTS at NEC of BROADWAY & HAWES

Bradley Winkler

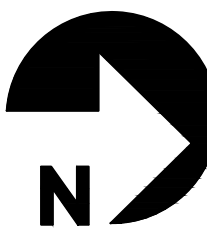
MATCH SHEET 3



SYMBOL	BOTANICAL NAME	COMMON NAME	SIZE	QTY.
MASTERS PLANT LEGEND				
TREES (LARGE)				
	ACACIA SALICINA 'DORIS D'	HYBRID WILLOW ACACIA	24' 36" BOX*	42
	PARKINSONIA 'AZT'	HYBRID PALO VERDE	24' 36" BOX*	20
	PROSOPIS HYBRID 'LESLIE ROY'	TEXAS HONEY MESQUITE	24' 36" BOX*	42
	QUERCUS VIRGINIANA	LIVE OAK	24' 36" BOX*	31
	SISSOO	DALBERGIA SISSOO	24" BOX	69
	ASH	FRAXINUS VELUTINA	24' 36" BOX*	17
TREES (MEDIUM)				
	CAESALPINIA MEXICANA	MEXICAN BIRD OF PARADISE	24' 36" BOX*	31
	CHITALPA TASHKENTENSIS	CHITALPA	24' 36" BOX*	33
*NOTE: FINAL PLANS TO INDICATE INDIVIDUAL TREE SIZES TO MEET CITY REQUIRED SIZES				
PALMS				
	PHOENIX DACTYLIFERA	DATE PALM (DIAMOND CUT)	24 TF	10
	PHOENIX ROBELINII	PYGMY DATE PALM	15 GAL	35
SHRUBS				
	BOUGAINVILLEA 'LA JOLLA'	SHRUB BOUGAINVILLEA	5 GAL	190
	CAESALPINIA PULCHERRIMA	RED BIRD OF PARADISE	5 GAL	155
	CORDIA PARVIFOLIA	LITTLE LEAF CORDIA	5 GAL	105
	DODONAEA VISCOSA	GREEN HOPSEED	5 GAL	60
	EREMOPHILA HYGROPHANA	BLUE BELLS	5 GAL	139
	LEUCOPHYLLUM 'LYNNIS LEGACY'	HYBRID TEXAS SAGE	5 GAL	87
	MUHLENBERGIA RIGENS	DEER GRASS	5 GAL	184
	OLEA EUROPAEA 'DWARF OLIVE'	DWARF OLIVE	5 GAL	162
	RUELLIA PENINSULARIS	BAJA RUELLIA	5 GAL	351
	RUESSELLIA EQUSETIFORMIS	CORAL FOUNTAIN	5 GAL	345
	TECOMA STANS ANGUSTATA	YELLOW BELLS	5 GAL	26
ACCENTS				
	AGAVE DESMETIANA	VARIEGATED SMOOTH AGAVE	5 GAL	31
	ALOE BARBADENSIS	MEDICINAL ALOE	5 GAL	104
	DASYLIRION WHEELERI	DESERT SPOON	5 GAL	204
	DIETS IRRIDIODES	AFRICAN IRIS	5 GAL	30
	ECHINOCACTUS GRUSONII	GOLDEN BARREL CACTUS	5 GAL	39
	FOUQUIERIA SPLENDENS	OCOTILLO	24" BOX	42
	HESPERALOE FUNIFERA	GIANT YUCCA	15 GAL	78
	HESPERALOE PARVIFLORA	RED YUCCA	5 GAL	349
	OPUNTIA VIOLACEA	PURPLE PRICKLY PEAR	5 GAL	118
	PORTULACARIA AFRA	ELEPHANT'S FOOD	5 GAL	35
	PACHYCERUS MARGINATUS	MEXICAN FENCE POST	15 GAL	3
GROUNDCOVERS				
	EREMOPHILA GLABRA 'MINGEW GOLD'	OUTBACK SUNRISE EMU	1 GAL	140
	LANTANA 'DALLAS RED'	RED LANTANA	1 GAL	37
	LANTANA 'NEW GOLD'	NEW GOLD LANTANA	1 GAL	148
	ROSMARINUS OFFICINALIS 'HUNTINGTON CARPET'	TRAILING ROSEMARY	5 GAL	227
	SETCREASEA PALLIDA	PURPLE HEART	5 GAL	63
	SPHAGNETICOLA TRILOBATA	YELLOW DOT	1 GAL	66
VINES				
	BOUGAINVILLEA 'BARBARA KARST'	BOUGAINVILLEA VINE	5 GAL	10
	BIGNONIA CAPREOLATA	CROSSVINE	5 GAL	27
MISC				
	DECOMPOSED GRANITE: 2" DEPTH (U.O.N.) OF 1/2" SCREENED 'MADISON GOLD'			
	SYNTHETIC TURF: 'HEATWAVE' 65 OZ. NYLON, AVAILABLE FROM SYNTHETIC TURF SYSTEMS			
	DECOMPOSED GRANITE COBBLE RIP RAP: ARIZONA GOLD BY GRANITE EXPRESS			

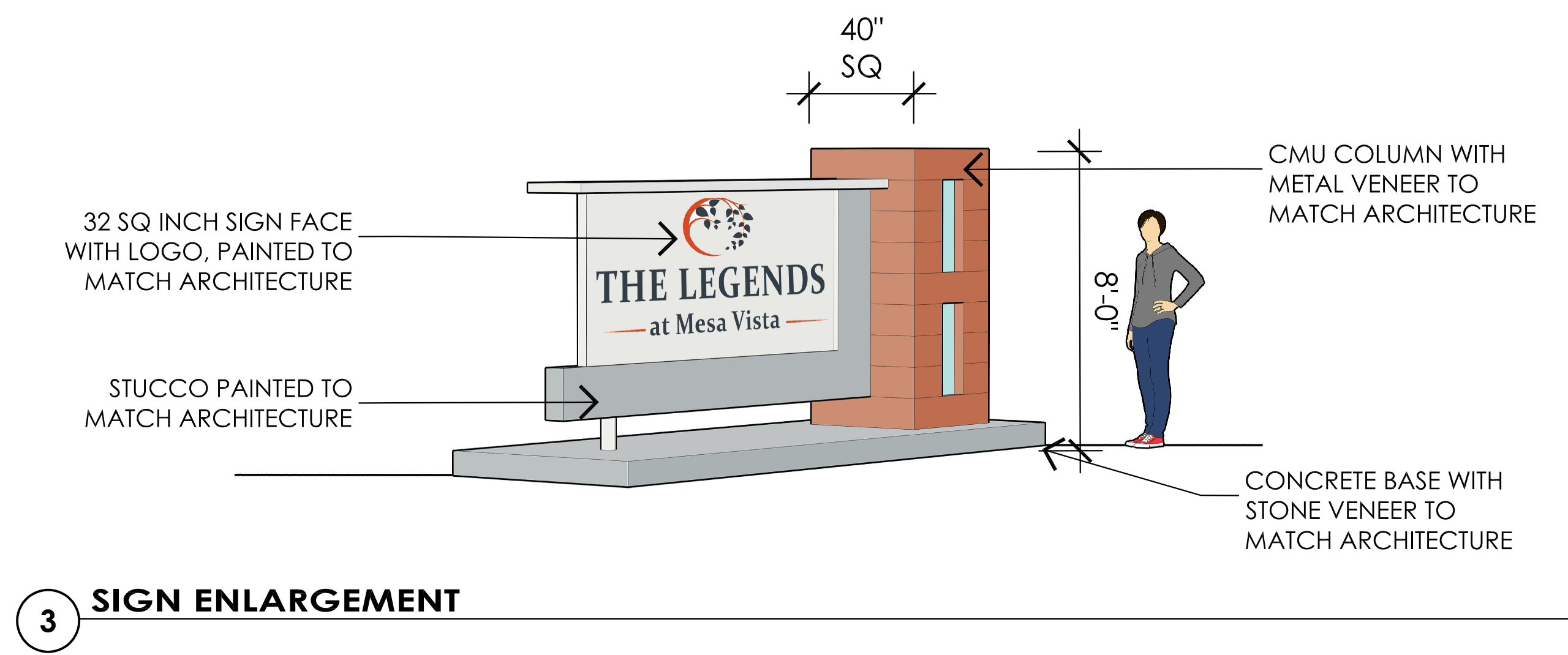
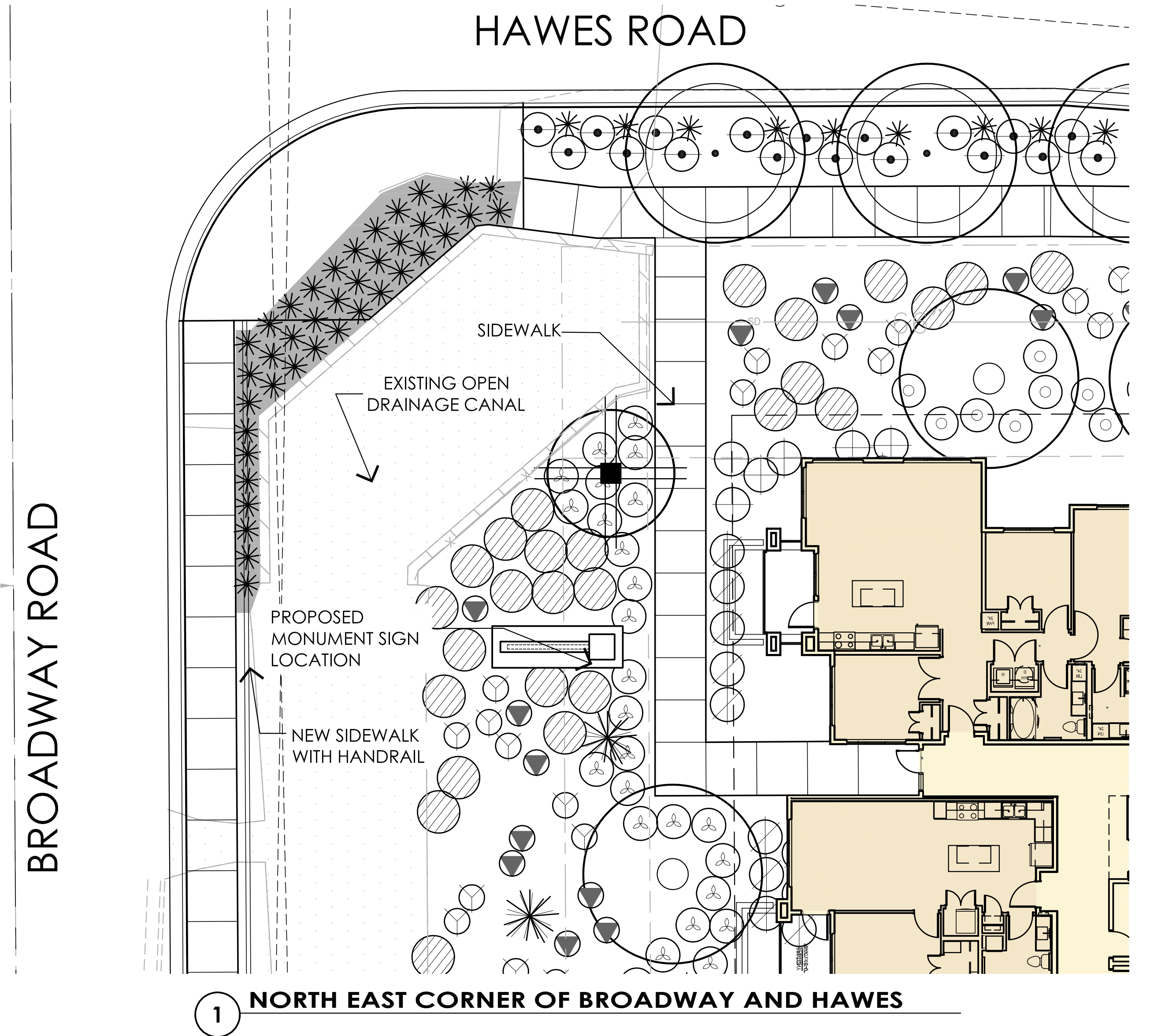
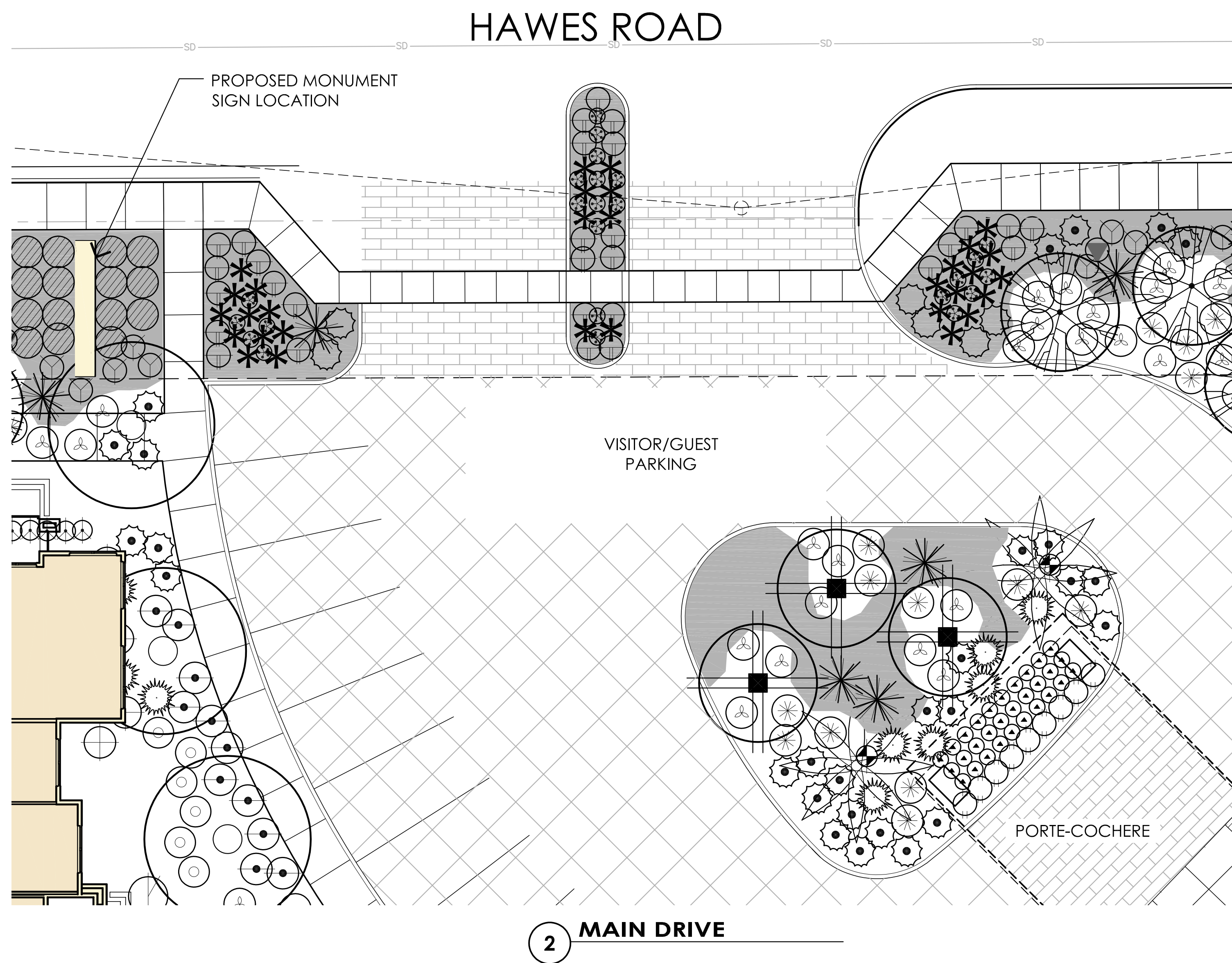
3: CONCEPTUAL LANDSCAPE PLAN ENLARGED

SCALE: 1" = 20'-0"



Bradley A. Winkler

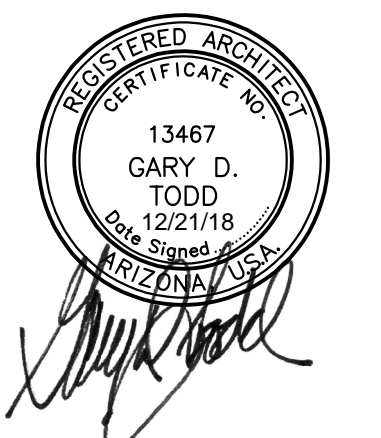
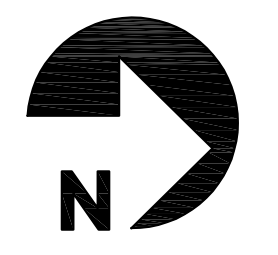
APARTMENTS at NEC of BROADWAY & HAWES



MONUMENT SIGN CONCEPT

SCALE: 1" = 10'-0"

0' 5' 10' 20'



APARTMENTS at NEC of BROADWAY & HAWES



SOUTHWEST CORNER WITH MONUMENT SIGN

APARTMENTS at NEC of BROADWAY & HAWES

DECO LIGHTING

D809-LED
Bellino Outdoor Luminaire

Client: _____ Order #: _____
Project Name: _____ Type: **SA1** Qty: _____


Performance Data
CRI
70+ (5000K)
80+ (4000K and lower)

CCT
3000K, 3500K, 4000K, 5000K

Projected Lifetime
100,000+ Hours (L70)

Dimming
0-10V Dimming Standard,
100% down to 10%

Operating Temperature
-40°C to +55°C Ambient



Description
The D809-LED Bellino Outdoor Luminaire sets the standard in flexibility for architectural area lighting. Featuring traditional styling paired with a rugged, heavy-gauge, spun aluminum housing and energy-efficient modern LED technology. Standard finish is dark bronze, but other architectural colors are available. The Bellino offers unparalleled variety with a choice of head count and mounting arm styles in one family of fixtures. Ideal for streets, parking lots, and surrounding areas. U.L. listed and CSA certified for wet locations.

Features

- Housing is heavy duty spun and cast aluminum.
- Standard color is bronze; also available in black and white. Contact factory for custom finishes.
- Type II, III, and V distributions available.
- Available as a single, double, triple, or quad head configuration; also available as a wall mount luminaire.
- Delivers up to 115 lm/W at 5000K.
- Offered in 20W to 200W packages (note that wattage is per head).

UL **10 Yr** **USA**
Listed Warranty Industry Leader Buy American for Government

D809-LED

Ordering Information

1 FIXTURE SERIES	2 CCT	3 ARM	4 Finish
D809-LED Bellino Outdoor Luminaire	30 3000K 36 3500K 40 4000K 50 5000K	See Page 3 5 MOUNTING 1 Blank 2 Double 3 Triple 4 Quad 1W Wall Mount	BZ Bronze BL Black WH White CU Custom
6 WATTAGE/LUMENS (SIZE 10)	7 VOLTAGE	8 POLE OR TENON SIZE	9 OPTION
30 20W/2190lm 36 30W/3280lm 40 40W/4370lm 50 60W/6550lm 80 80W/8740lm	UNV 120-277V S47 347V 480 480V (Step-Down Transformer used for 480V Divide)	PT Post Top 2 3/8" Tenon PT3 Post Top 3" Tenon PT4 Post Top 4" Tenon	SM Smart Dim PC Photocell WSF Wired Single Fuse WDF Wired Double Fuse
10 (SIZE 20)	11 OPTICS		
100 100W/10920lm 120 120W/13110lm 140 140W/15298lm 160 160W/17480lm 200 200W/21840lm	T2 Type 2 T3 Type 3 T5 Type 5		

© Copyright Deco Lighting, Inc. 2018
5817 Mill Ave.
Chico, CA 95926

www.galileosystems.com
info@galileosystems.com
(916) 835-0300
(916) 835-0302

Deco Lighting practices a program of continuous product development, and as a result product specifications change frequently. We reserve the right to change product specifications without notice. Contact Deco for the latest product information.

Rev Date: 05/01/18 48

UGI-10005
Gino 6 Single Head Bollard

7144 NE Progress Ct | 1.503.645.0500
Hillsboro, Oregon 97124 | F. 503.645.8100
www.ligmanlightingusa.com

LIGMAN LIGHTING USA

PROJECT _____ DATE _____
QUANTITY _____ TYPE **SB** NOTE _____

ORDERING EXAMPLE || UGI - 10005 - 10w - W30 - 02 - 120/277v - Options

LAMP	BEAM	LED COLOR	FINISH COLOR	VOLTAGE
10w LED	T1 - Type I Distribution - 790lm T2 - Type II Distribution - 791lm T3 - Type III Distribution - 827lm T4 - Type IV Distribution - 820lm	W27 - 2700K W30 - 3000K W35 - 3500K W40 - 4000K	01 - BLACK RAL 9011 02 - DARK GREY RAL 7045 03 - WHITE RAL 9003 04 - METALLIC SILVER RAL 9006 05 - MATTE SILVER RAL 9006 06 - BRONZE RAL 6014 07 - CUSTOM RAL	120/277v Other - Specify

ADDITIONAL OPTIONS

NAT - Natrium Rated
CFCI - CFCI Box
DIM - 0-10v Dimming
WLC - Wireless Lighting Controls

HGT - Custom Bollard Height
HSS - House Side Shield
F - Frosted Lens

Vertex 7

WALL / CEILING MOUNT LED

Failure Type **SC** Date _____
Job Name _____ Approved By _____
Catalog Number CLFxx-PRD* - - - - -

SPECIFICATIONS

Description
The Vertex 7 series combines sophisticated optical performance with an economical, durable, steel construction that is typically used in applications where durability and price are both equally considered. Successful applications have included public schools, airports, industrial facilities and public rest areas. The Vertex 7 series is also available with energy saving occupancy sensors and can be continuous row mounted as needed.

Housing
Die formed 18 gauge cold rolled zinc coated steel. Finished with electrostatically applied polyester powder coat.

Lens
Extruded UV stabilized polycarbonate with integral prisms. Maximum wall thickness 0.160". Secured to housing with injection molded end caps and 2 captive stainless steel TORX® head screws.

End Caps
Injection molded UV stabilized polycarbonate with minimum wall thickness 0.140". Secured to housing with 2 captive stainless steel TORX® head screws per side. Provisions for surface conduit entry.


Driver
Constant current driver at 700mA, 120-277V, 347V optional.

LED
Samsung LM561B+ series @ 2700K, 3000K, 3500K, 4000K or 5000K and 82 CRI wired in parallel-series. L₇₀ projected life of over 130,000 hours at 50°C. Tested in accordance with LM-80. Ten year warranty on LED boards against operational defects.

Listings
U.L., C.U.L., Damp optional. Product listed on the DesignLights Consortium Qualified Products List. Please check the DLC Qualified Products List at www.designlights.org/QPL for listed configuration details.

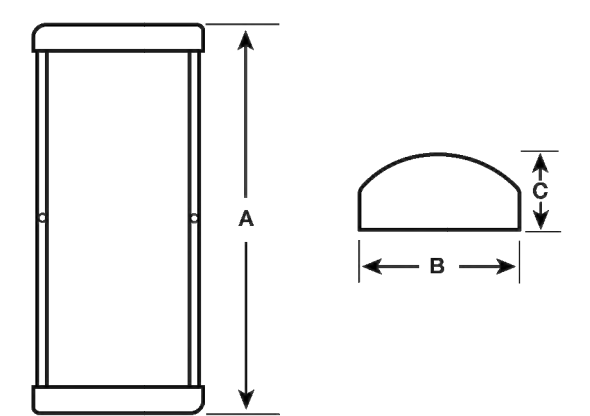
Lifetime Warranty
Luminaire LED Incorporated will repair or replace any fixture damaged due to vandalism for the lifetime of the installation.

ADA Compliant



DIMENSIONAL DATA

	A	B	C
CLF71	16.11	7.35	3.16
CLF72	25.38	7.35	3.16
CLF73	35.73	7.35	3.16
CLF74	47.58	7.35	3.16



Luminaire LED
www.luminaireled.net

5 Sutton Place
P.O. Box 2162
Edison, NJ 08818

F. 732.549.0056
F. 732.549.0737

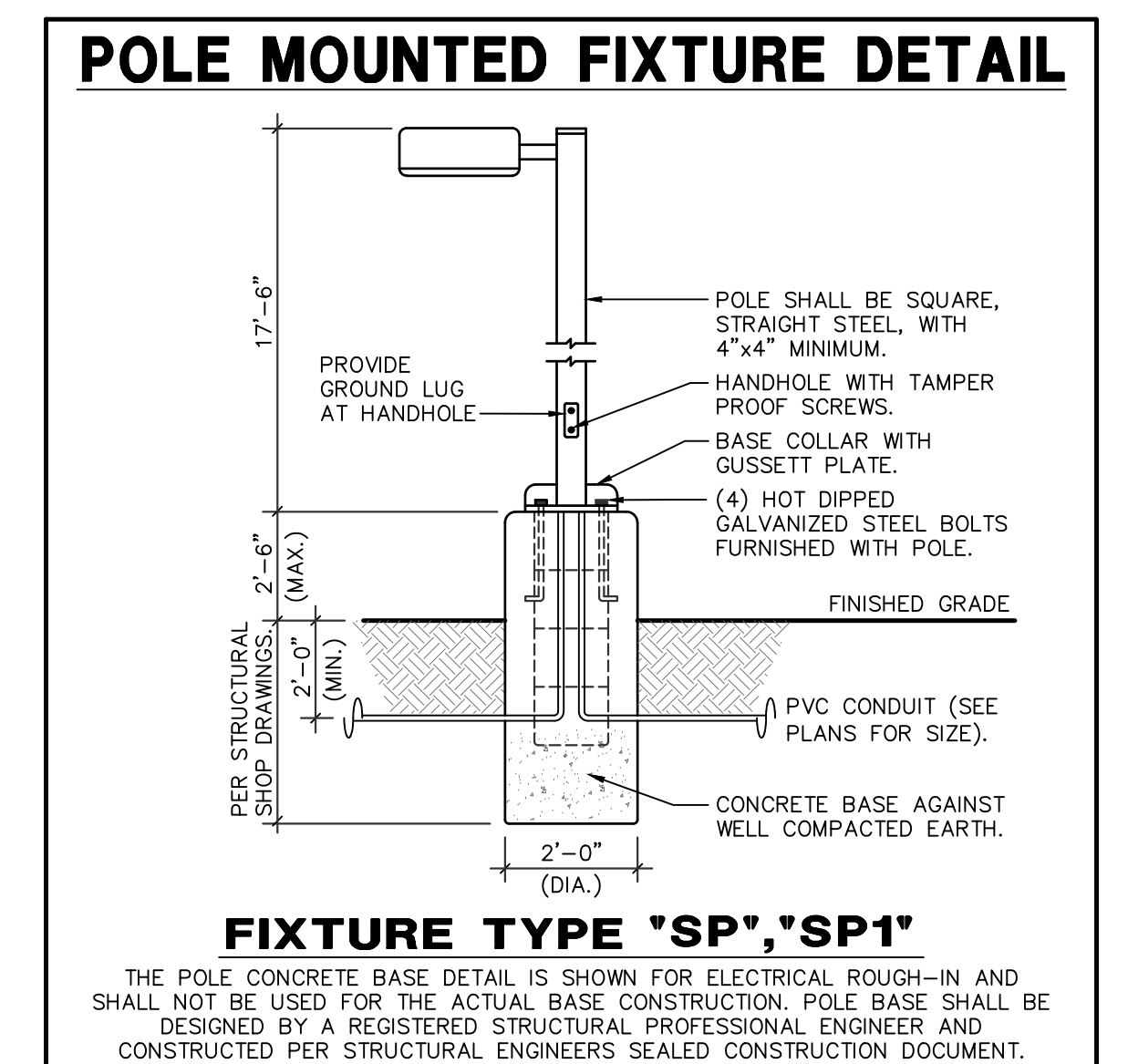
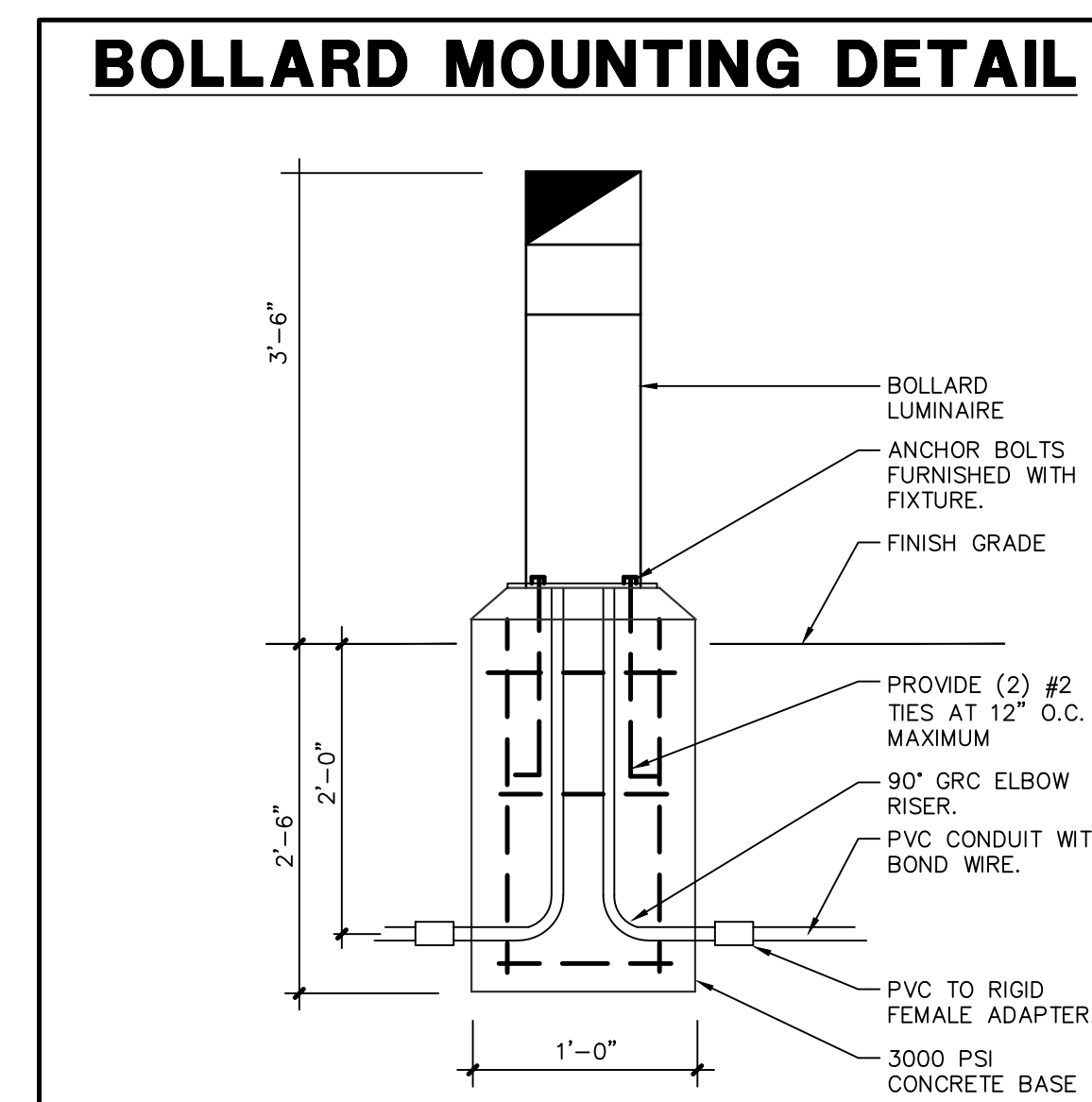
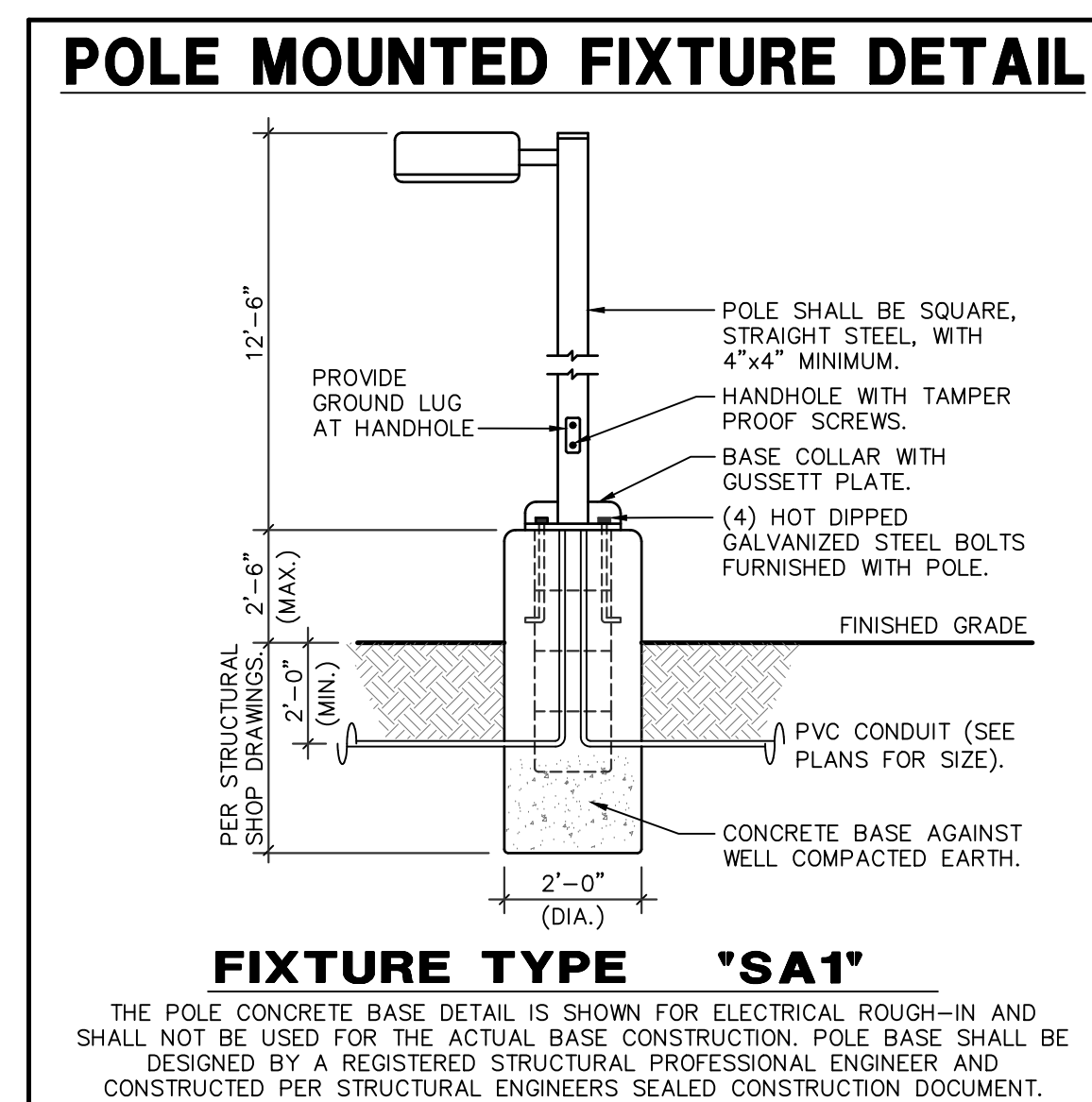
Luminaire LED Incorporated products are manufactured in the USA with components purchased from USA suppliers, and meet the Buy American requirements under the AFRA. Content of specification sheets is subject to change; please consult our website for current product information.

Rev: 07/18

LUMINAIRE SCHEDULE

- PROVIDE 90-MINUTE EMERGENCY BATTERY BACK-UP FOR ALL EMERGENCY FIXTURES. SEE SCHEDULE BELOW FOR SPECIFICATIONS AND LUMEN REQUIREMENTS.
- MODULAR WIRING SYSTEM FOR LIGHT FIXTURES IS AN ACCEPTABLE ALTERNATE.
- BASE BID FOR LUMINAIRES SHALL BE BASED ON MANUFACTURERS LISTED IN CONTRACT DOCUMENTS. UPON AWARD OF PROJECT, ALTERNATES PROPOSED BY CONTRACTOR SHALL BE SUBMITTED WITH WRITTEN OWNER APPROVAL & AN ITEMIZED DEDUCT TO BASE BID.
- ALTERNATE FIXTURE SELECTIONS MAY REQUIRE ADDITIONAL TIME FOR SUBMITTAL REVIEW & POSSIBLE ENGINEERING DESIGN CHANGES, TO BE BILLED TO THE CONTRACTOR.
- PROVIDE MINIMUM 10 MINUTE TIME DELAY ON EMERGENCY FIXTURES WHEN HID AREA LIGHTING IS USED.

MARK	MANUFACTURER MODEL NUMBER	VOLTS	LAMPS CRI/CCT INPUT WATTS	REMARKS/MOUNTING
SA1	DECO LIGHTING D809-LED-80-30-UNV-T3	MVOLT	LED 77.0 WATTS	POLE LIGHT FIXTURE
SB	LIGMAN UGI-10005-T3-W30	MVOLT	LED 11.0 WATTS	BOLLARD LIGHT FIXTURE
SD	HUBBELL TRPI-12L15-3K7-4	MVOLT	LED 14.0 WATTS	EXTERIOR WALL MOUNT LIGHT FIXTURE
SF	PRESCOLITE LC6ML-6LCML24L30KB	MVOLT	LED 33.0 WATTS	6" DOWNLIGHT FIXTURE
SP	HUBBELL ASL-16L-3K-2104-EHS	MVOLT	LED 115.0 WATTS	POLE LIGHT FIXTURE
SP1	HUBBELL ASL-16L-3K-2103-EHS	MVOLT	LED 115.0 WATTS	POLE LIGHT FIXTURE
SC	LUMINAIRE LED CLF72-25W-4000K OP	MVOLT	LED 30.0 WATTS	COVERED PARKING LIGHT FIXTURE



CUT SHEETS

APARTMENTS at NEC of BROADWAY & HAWES

TODD & ASSOCIATES, INC.
ARCHITECTURE PLANNING LANDSCAPE ARCHITECTURE
602.952.8280p www.toddassoc.com

Project Contact/Designer: **RANDY GROTHAUS**
Project # 18245
HAWKINS DESIGN GROUP INC.
ELECTRICAL CONSULTING ENGINEERS
252 SOUTH VINEYARD AVE. SUITE 107
MESA, ARIZONA 85204
PH: 480.615.9100 FAX: 480.613.9001
EMAIL: rgr@hawkinsdg.com

PRELIMINARY NOT FOR CONSTRUCTION
Expires: XX/XX/XX

Mesa, Arizona
DESIGN REVIEW EXHIBIT
Project No. 18-2021-00 Date 10-29-2018

DR3.0
PRELIMINARY NOT FOR CONSTRUCTION

DOMINIUM
2905 NORTHWEST BLVD #150
PLYMOUTH, MN 55441
763-354-5546 p

IF DRAWING IS NOT PLOTTED AT 24 X 36 THEY ARE NOT FULL SIZE

